



# Fraser Park Primary School

## Newsletter



Government of South Australia  
Department for Education

### THE FRASER PARK BZZZ

#### Important Diary Dates for Term 4

10/11

Monarto Trip  
Kindy—Year 1

17/11

Sausage Sizzle

24/11

Port Noarlunga  
Whole School

6/12

School Concert

14/12

Pool Day

The term is passing us by at an incredible speed but the students keep producing fantastic work. Teachers are busily writing reports for the end of year reports so everyone is working hard.

Please note that there has been a couple of changes to the calendar. Port Noarlunga will now be on the 1st of December instead of the 24th of November and the end of year pool day will be on Thursday the 14th of December. Notes for Port Noarlunga will be coming out next week so make sure you check your child's bag.

Reminder to ensure students wear hats to school as the weather starts to increase. We are getting closer to Summer and by the end of this week, temperatures will be in the high 30s.

If you want to have a sausage (or three), please make sure that you bring back your forms and money to the front office. If you need a replacement form, they can be collected from the front office.



## Principal's Piece

It's hard to believe we are in week four already. It is great to see the high level of work coming out of each of the classrooms. I have been super impressed with the students who have read to me in my office. The improvement they have shown is terrific. It is great to walk through each classroom every morning and see the level of engagement.

Teachers are busy working on each child's end-of-year report, and they are using data collected through terms 3 and 4. There is still lots of work to be completed before the teachers can finalise the reports. Let's make sure all students are present every day, giving your child every opportunity to complete the tasks. We can get our average attendance by over 85% for term 4.

What a wonderful experience our AFL max camp was for our year 2 – 6 students. It was great to see all the students trying new activities and, for some, new foods. The trampolines were a popular activity for both the staff and students. Over the two days, many photos were taken, and we will ensure many images are shared with families.

Our preschool and reception classes will be visiting Monarto on Friday. The day is jam-packed and full of fun, and I cannot wait to hear about the adventures when they return. We have locked in our Port Noarlunga beach day; please watch for the information coming home this week. We have also locked in our end-of-year pool date; information will be sent home in the coming weeks.

On Friday (Student Free Day), staff spent time reflecting on the teaching and learning in 2023 and planning and preparing for 2024. We had Kathy for the Literacy Guarantee Unit working with staff, fine-tuning our literacy block. We have lots of exciting things planned for 2024. It is exciting to announce that next year, we will be returning to four classes. There will be some staffing changes next year due to a variety of reasons, and I am hopeful to have all staff appointments before the end of the term. More information will be sent home in the coming weeks. If you have any questions, please come and see me.

We are nearly at the halfway point of the term, but we still have lots of learning to do. We look forward to sharing more of this learning via our Facebook page and the newsletter.

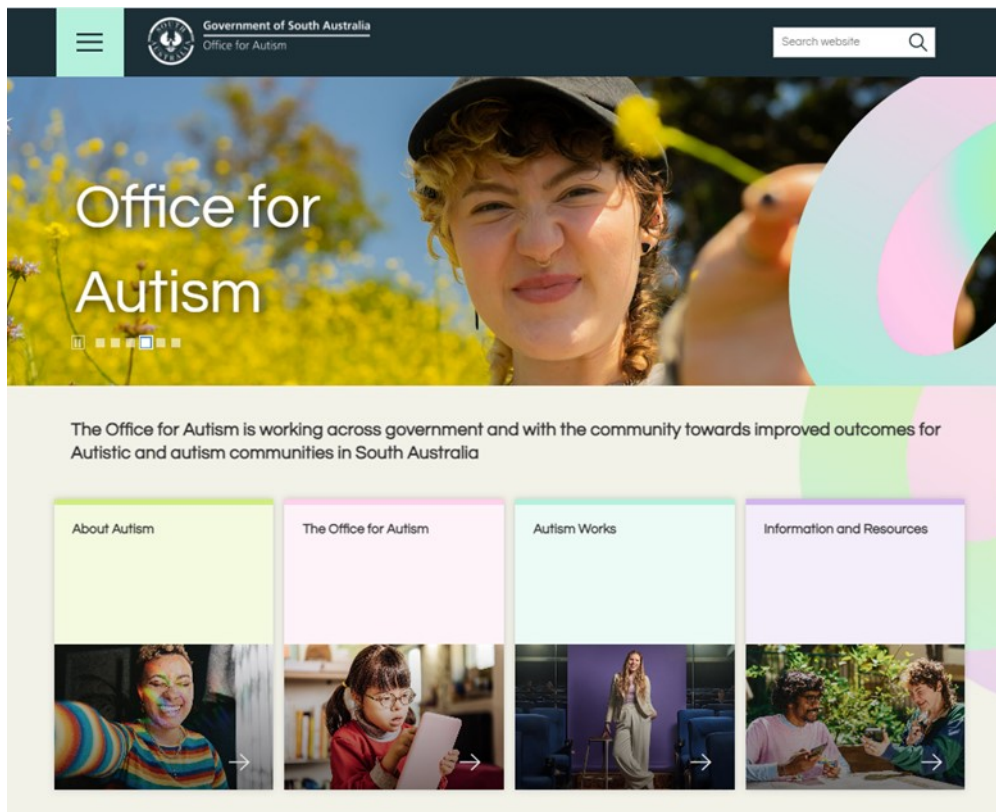
Kimberly

“Learn from yesterday, live for today, hope for tomorrow.”

**Albert Einstein**

# Wellbeing Corner

This week I had the opportunity to attend an Autism inclusion conference. There were some amazing presenters including Professor Dawn Adams from the Autism Centre of Excellence, Dr Emma Goodall and our very own Minister for Education Blair Boyer. The government has recently launched a one stop information hub to improve outcomes for Autistic and autism communities in South Australia. If you have some time it is a very worthwhile hub with a huge amount of information, resources and a directory of services. You can find this information hub at:



[www.officeforautism.sa.gov.au](http://www.officeforautism.sa.gov.au)

After a busy start to the term, everyone is feeling a bit tired and lack lustre. It is important for us as adults and children to get to required amount of rest to keep learning and be in control of our emotions and actions.

Health and Wellbeing is very important for us all, including our children, parents, staff, and the school community. My office is always open if you have something you would like to discuss. Please make an appointment time.

# Pastoral Passage

What an experience and opportunity for the older students to participate in the AFL Max Camp overnight last week. The children had a great time participating in activities and learning about their emotional wellbeing in an interesting and engaging format for the students. A huge pat on the back for the students who rose to the occasion and conducted themselves well at camp overall. A special thank you and acknowledgement of all the hard work Kimberly put in to make this camp and be such a success that it was. Well, done Kimberly and to all the staff involved. It was great for me as the school chaplain to go along and be part of the camp with the students. By the end of the camp I certainly felt my age and some.

Welcome to new families and their children to Fraser Park school community. Just a reminder that the Kingdom Kids Club program is on Wednesdays at lunchtime in Pinyali classroom. It is a completely voluntary program to be involved in with a Christian based message. At present the children are working out which song/dance they want to do at the end of year school concert in early December. The past couple of weeks we have been trialing several songs.

On Thursday 16th November a Pop-Up Barbecue lunch, (Sausage Sizzle) is going to be available to students and staff at a cost of \$1.00 per sausage to help cover costs. Parent volunteers are going to assist me to cook the sausages. Orders have to be in by end of school Tuesday 14-11-2023.

I work Monday & Wednesday from 11.00 a.m. to 3.00 p.m. and Thursday all day 0830 to 3.00 pm. If you have any pastoral needs or physical needs please contact the office and I will make contact with you. Or simply speak to me out the yard and if necessary, we can make another appointment.

Ian Kluge,

Chaplain



Come along to the Learning Together Community playgroups. Our playgroups are all about playing, singing, learning, and having fun together.

Morning tea is provided for the kids and tea, coffee, and milo for you. We

Drop in for a play on Monday or Wednesday at 10:00 am or come into our Baby play on Tuesday Mornings.

Other programs are available too! Nature Play at local parks, Cooking Together and Parenting programs.

For more information call Adele on  
0423 020 991



# Classroom Profile

## Wuldi

As we find ourselves at the midpoint of Term 4, we are thrilled to share the fantastic progress and memorable moments that have unfolded so far. Wuldi has been buzzing with energy and enthusiasm and it's been an exciting term already. This term, Wuldi students went on camp to AFL MAX and have also been lucky enough to have been visited by some slithery friends thanks to some wonderful parents. Students have been working hard on their Spelling, English and Maths and have been enjoying playing out in the warmer weather during recess and lunch times. Here are some photos from our recent adventures. We hope you like them!



# Community Page



Your child's dental health is important to their overall health and wellbeing.

All children from 0-18 years are welcome to attend SA Dental. There are no out-of-pocket costs for most families. To request an appointment, visit [www.dental.sa.gov.au/kids/request-an-appointment](http://www.dental.sa.gov.au/kids/request-an-appointment)

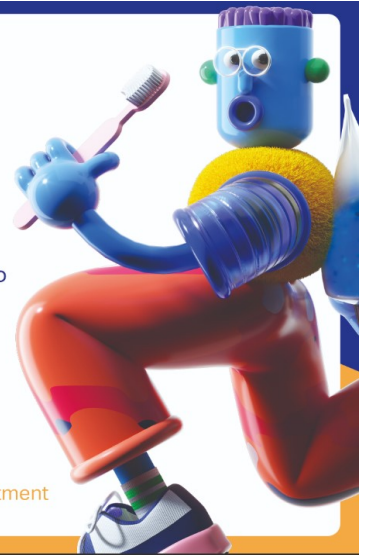


Your child's dental health is important to their overall health and wellbeing.

All children from 0-18 years are welcome to attend SA Dental. There are no out-of-pocket costs for most families. Book an appointment today!

To find your closest SA Dental clinic, visit [www.dental.sa.gov.au/find-a-clinic](http://www.dental.sa.gov.au/find-a-clinic)

To request an appointment, visit [www.dental.sa.gov.au/kids/request-an-appointment](http://www.dental.sa.gov.au/kids/request-an-appointment)



## MURRAY BRIDGE HIGH SCHOOL EXCLUSIVE UNIFORM FIT NIGHT

Nov  
14

Tuesday 14th November  
3:30 pm to 7:00 pm  
MBHS Resource Centre

Please attend the Fitting Night to order or purchase uniform ready for 2024.

Payment in full for orders and purchases is expected, ZipPay is available for buy now, pay later. Register prior to attending <https://zippay.com.au/>

To help speed up our service, online orders can be placed ahead of time so we can have your items ready to try on when you arrive. <https://onlinestore.devonclothing.com.au/shop-by-school/murray-bridge-high-school/>

If your child outgrows their uniform before they have a chance to wear it, we'll happily exchange it for you. However, goods must be returned in their original packaging with tags attached and in brand new condition. Refunds do not apply for a change of mind.



Coronavirus (COVID-19)



Devon Clothing Edwardstown  
84 Daws Road, Edwardstown  
dcus@devonclothing.com.au  
08 8350 7903

FACEBOOK.COM/  
DEVONCLOTHINGAUS/



Invites Year 6 Students  
and Families to

## GETTING READY FOR 2024 & UNIFORM FIT NIGHT

**Tuesday 14th November**

Free BBQ 4:45-5:45pm

Ready for 2024 Presentation  
5:45-6:15pm

Join us @ MBHS in the new  
Sturt Building

Uniform fitting in Resource  
Centre 3:30-7:00pm

Important Note:

- No booking required



# Literacy and Numeracy Challenge

This weeks Literacy challenge is one of thinking outside the box. Use the clues in the picture to work out the phrases.

po **FISH** nd

**TIME** a b d e  
f g h i j  
k l m n o  
p q r s t  
u v w x y  
z

**funny funny**  
**word word**  
**word word**

**T B**  
Bush  
**A E**

This weeks Numeracy challenge is one of persistence and calculation. Work our what the value of the triangle is?

Can you solve this riddle?

$$\bigcirc + \bigcirc = 10$$

$$\bigcirc \times \square + \square = 12$$

$$\bigcirc \times \square - \triangle \times \bigcirc = \bigcirc$$

$$\triangle = ?$$

# Diary Dates

	Monday	Tuesday	Wednesday	Thursday	Friday
<b>Week 1</b>	16/10 Beginning of Term 4	17/10	18/10	19/10	20/10 Football Clinic Wanyi Bowling
<b>Week 2</b>	23/10	24/10	25/10	26/10 Assembly	27/10 Football Clinic
<b>Week 3</b>	30/10	31/10 AFL Max Camp Year 2—6	1/11 AFL Max Camp Year 2—6	2/11	3/11 Student Free Day
<b>Week 4</b>	6/11	7/11 Governing Council	8/11	9/11	10/11 Monarto Zoo Trip Football Clinic
<b>Week 5</b>	13/11	14/11	15/11	16/11 Sausage Sizzle Assembly	17/11 Football Clinic Wanyi Bowling
<b>Week 6</b>	20/11	21/11	22/11	23/11	24/11 Wanyi Bowling
<b>Week 7</b>	27/11	28/11	29/11	30/11	1/12 Port Noarlunga
<b>Week 8</b>	4/12	5/12 Drumming High School	6/12 School Concert Year 6 Graduation Dinner	7/12	8/12 Wanyi Bowling
<b>Week 9</b>	11/12	12/12	13/12	14/12 Pool Day	15/12 End of School Year Assembly



# Preschool

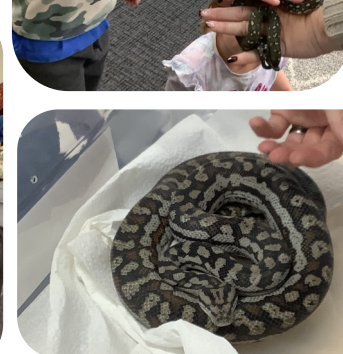
## at Fraser Park

### SunSmart

As a SunSmart preschool we would like to remind our families that sunscreen and a broad brimmed or bucket style hat are required to play outside. We have sunscreen available at sign in for you to assist your child. Staff will also support your child to re-apply



Last week we had a very special visit from Mackenzie V's parents, who brought in some family pets for a visit! We talked about the dangers of snakes, and how we should respond if we see one in the garden. If we see a snake, we need to back away slowly, then go & tell an adult right away.



# Term 4 Preschool Diary

(Preschool Session Days are highlighted in green)

	Monday	Tuesday	Wednesday	Thursday	Friday
Week 1	16/10	17/10	18/10	19/10	20/10
Week 2	23/10	24/10	25/10	26/10	27/10
Week 3	30/10	31/10	1/11	2/11	3/11
Week 4	6/11	7/11	8/11 No Preschool Today	9/11	10/11 Monarto Excursion
Week 5	13/11	14/11 Fraser Park Reception Transition 9-11am	15/11	16/11	17/11
Week 6	20/11	21/11 CAFHS Health Checks	22/11 Fraser Park Reception Transition 9-11am	23/11 Preschool Transition 9-11am	24/11
Week 7	27/11	28/11 Fraser Park Reception Transition 9-11am	29/11	30/11 Preschool Transition 9-11am	1/12
Week 8	4/12	5/12	6/12 End of Year Concert (Evening)	7/12	8/12
Week 9	11/12	12/12 End of Year Celebration with Families 1:30pm	13/12	14/12	15/12